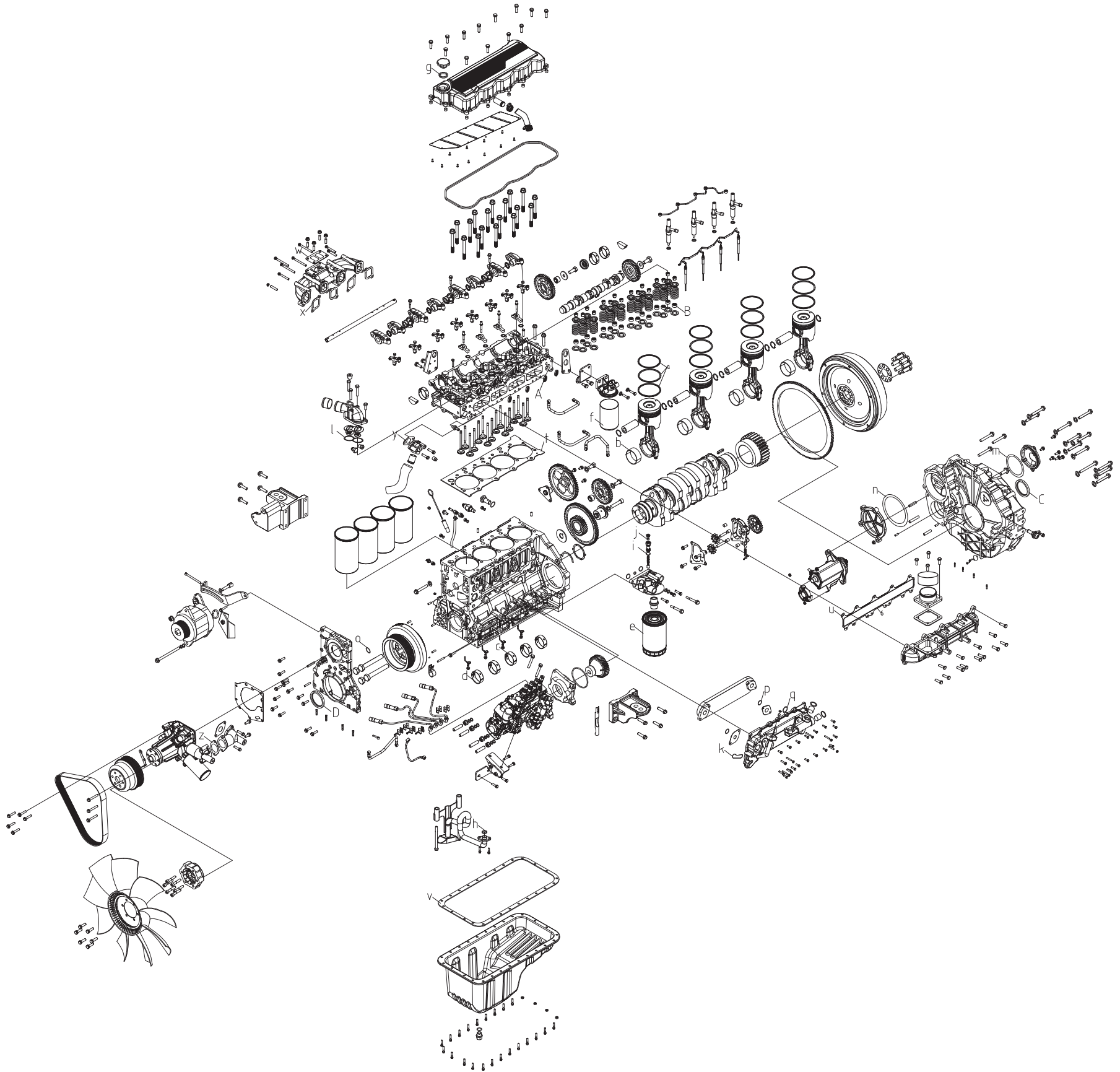


ASSEMBLY AND PARTS ALBUM

KD4114.KD4114Z parts drawing



Easy-destroyed parts

No.	Part No.	Description	Qty.
a.	KD4114-1004100T	Piston ring	4
b.	KD4115-1004005	Connecting rod bearing shell	8
c.	KD4115-1002002	Upper main bearing shell	5
d.	KD4115-1002003	Bottom main bearing shell	5
e.	KD4115-1013100	Oil filter	1
f.	KD4115-1105110	Fuel filter element	1

Seal ring

No.	Part No.	Description	Qty.
g.	KD4115-1003302	Seal ring for oil filling cap	1
h.	KD4115-1010006	Seal ring for rough filter	1
i.	KD4115-1013204	O ring 16*2.65	1
j.	KD4115-1013202	O ring 12*2	1
k.	KD4115-1012002	Seal ring for oil cooler	1

Seal ring

No.	Part No.	Description	Qty.
l.	KD4115-1306004	Seal ring for thermostat	2
m.	KD4115-1002015	Seal ring for idle gear cover board	1
n.	KD4115-1002013	Seal ring for output cover board	1
o.	KD4115-1002203	O seal ring for front end cover	1
p.	KD4115-1012007	O seal ring for cooler element	2
q.	KD4115-1012003	O seal ring for oil cooler	1

Gasket

No.	Part No.	Description	Qty.
r.	KD4115-1010005	Flange gasket for rough filter	1
t.	KD4115-1003400a	Cylinder head gasket	1
u.	KD4115-1007002	Air intake pipe gasket	1
v.	KD4115-1009001	Oil pan gasket	1
w.	KD4115-1008100	Air exhaust vent gasket	1
x.	KD4115-1008002	Exhaust manifold gasket	4
y.	KD4115-1307007	Water pipe seat gasket	1
z.	KD4115-1307011	Flange gasket	2

Oil seal

No.	Part No.	Description	Qty.
A.	KD4115-1003017	Oil seal for high pressure fuel pipe	4
B.	KD4115-1003005	Oil seal for valve rod	16
C.	KD4115-1002302	Crankshaft rear oil seal	1
D.	KD4115-1002202	Crankshaft front oil seal	1

Tightening torque for main nuts and bolts

No.	Description	Unit Torque
1	Main bearing bolt (M14*115)	180-200
2	Main bearing bolt (M10*82)	75-85
3	Idle gear A bolt M(14*67)	150-170
4	Idle gear B bolt M(14*30)	150-170
5	Idle gear C tightening bolt M(14*65)	150-170
6	Compressing bolt for camshaft timing gear(M14*40)	160-180
7	Cylinder head bolts (M14*115)	200-220
8	Flywheel bolts(M16*62)	290-310
9	Vibration absorber pulley	210-230
10	Connecting rod bolts (M13*57)	170-190

Cylinder head assembly KD4115-1003000

No. Part No.	Description	Qty.
1	GB/T5789-1986 Bolt M8*35	13
2	KD4115-1003301 Oil filling cap	1
3	KD4115-1003302 Seal ring for oil filling cap	1
4	KD4115-1003305a Cylinder head cover	1
5	KD4115-1003310 Rubber shock absorber cushion	13
6	KD4115-1003306a Breather hose	1
7	QC/T621-1997 Hoop Q673B34	2
8	KD4115-1003304 Rubber hose for breather	1
9	KD4115-1003307a Breather plate	11
10	GB/T818-2000 Screw M5*12	11
11	KD4115-1003303 Seal ring for cylinder head cover	1
12	KD4115-1002105 Main bearing cap bolt M14*115	18
13	KD4115-1003014 Bolts for rocker arm seat	4
14	KD4115-1003211a Exhaust valve rocker arm	3
15	KD4115-1003202 Waveform spring washer	4
16	KD4115-1003211a Air intake valve rocker arm	4
17	KD4115-1003203 Rocker arm seat	3
18	KD4115-1003201a Rocker arm shaft	1
19	GB/T5789-1986 Bolt M10*20	2
20	KD4115-1003015 Front lifting eye	1
21	GB/T5789-1986 Bolt M8*40	2
22	KD4115-1003602 Valve driving bridge	8
23	KD4115-1003011a Fuel injector bolt	4
24	KD4115-1003009 Fuel injector pressing plate	4
25	KD4115-1003012 Seal gasket for fuel injector	4
26	GB/T5789-1986 Bolt M10*72	1
27	GB/T5789-1986 Bolt M10*42	1
28	KD4115-1003510 Idle wheel D joint part	1
29	KD4115-1003503 Idle wheel D shaft	1
30	KD4115-1003502 Idle wheel D pressing plate	1
31	KD4115-1003501 Idle wheel D tightening bolts	1
32	KD4115-1003504 Idle wheel D cover board	1
33	KD4115-1003022 Bottom camshaft bearing shell	3
34	KD4115-1003021 Upper camshaft bearing shell	3
35	KD4115-1003018 Seal block	2
36	KM493-1003001 Valve collet	32
37	KD4115-1003003 Valve spring seat	16
38	KD4115-1003004 Valve spring	16
39	KM493-1003005 Oil seal for valve rod	16
40	KD4115-1003005 Valve spring gasket	16
41	KD4115-1003016 Rear lifting eye	1
42	GB/T5789-1986 Bolt M12*22	2
43	KD4115-1003017 Oil seal for high pressure fuel pipe	4
44	KD4115-1003008 Air exhaust valve	8
45	KD4115-1003007 Air intake valve	8
46	KD4115-1003400a Cylinder head gasket	1
47	KD4115-1003023 Air vent pipe connector	1
48	KD4115-1003100 Cylinder head	1
49	KD4115-1003001 Wearing resistant cap for driving bridge	8

Booster assembly KD4115Z-1118000

No. Part No.	Description	Qty.
1	KD4105Z-1118410	1
2	GB/T619-1999 Hoop 70	1
3	KD4115Z-1118000	1
4	KD6121ZL-111912000	1
5	KD4115Z-1118100	1
6	KD4115Z-1118101	1
7	GB/T5789-1986 Bolt M8*20	2
8	KD4115Z-1118300	1
9	GB/T5789-1986 Bolt M8*40	2
10	KD4115Z-1118301	1
11	KD4115Z-1118002	1
12	JB/T6013-2000 Washer 14	1
13	KM493Z-1118302a	1
14	KD369-04601	1
15	KD488Z-18204	1
16	KD4115Z-1118202	1
17	GB/T5789-1986 Bolt M8*12	1
18	KD488Z-18201	1
19	KD488Z-18201	1
20	JB/T6013-2000 Washer 12	2
21	KD488Z-18001	1

Oil filter assembly KD4115-1010000

No. Part No.	Description	Qty.
1	KD4115-1010005	1
2	KD4115-1010000	1
3	GB/T5789-1986 Bolt M8*12	2
4	GB/T5789-1986 Bolt M10*150	2

Oil filter assembly KD4115-1013000

No. Part No.	Description	Qty.
1	KD4115-1013001	1
2	KD4115-1013002	1
3	KD4115-1013003	1
4	KD4115-1013004	1
5	KD4115-1013005	1
6	KD4115-1013006	1
7	KD4115-1013007	1
8	KD4115-1013008	1
9	GB/T5789-1986 Bolt M10*30	2
10	GB/T5789-1986 Bolt M10*90	2
11	KD4115-1013005	1
12	KD4115-1013003	1
13	KD4115-1013100	1
14	KD4115-1013002	1
15	KD4115-1013001	1

Starter assembly KD4115-3708000

No. Part No.	Description	Qty.
1	KD4115-3708100	1
2	GB/T6177.2-2000 Nut M14*1.5	2

Fuel filter assembly KD4115-1105000

No. Part No.	Description	Qty.
1	KD4115-1105200	1
2	KD4115-1105100	1
3	GB/T95-2002 Washer 10	2
4	GB/T5789-1986 Bolt M10*1*30	2
5	KD4115-1105110	1

Piston & Connecting rod assembly KD4114-1004000

No. Part No.	Description	Qty.
1	KD4114-1004100T	4
2	KD4114-1004001	4
3	KD4115-1004200	4
4	KD4115-1004005	4
5	GB/T893.2-1986 Spring retainer-B for holes	8
6	KD4115-1004004	4

Charging generator assembly KD4115-3701000

No. Part No.	Description	Qty.
1	KD4115-3701202	1
2	KD4115-3701201	1
3	KD4115-3701203	1
4	KD4115-3701204	1
5	GB/T6177.2-2000 Nut M12*1.25	1
6	GB/T5789-1986 Bolt M10*45	1
7	KD4115-3701300	1
8	KD4115-3701100	1
9	GB/T93-1987 Washer 12	1
10	GB/T97.1-2002 Washer 12	1
11	GB/T5785-2000 Bolt M12*1.5*160	1

Fuel pipelines assembly KD4115-1104000

No. Part No.	Description	Qty.
1	KD4115-1104110	1
2	KD4115-1104120	1
3	KD4115-1104130	1
4	KD4115-1104140	1
5	KD4115-1104220	1
6	KD4115-1104001	1
7	KD4115-1104700	1
8	KD4115-1104400	1
9	KD4115-1104500	1
10	KD4115-1104300	1
11	KD6134Z-112970000	3
12	KD4115-1104600	1

Oil pan assembly KD4115-1009000

No. Part No.	Description	Qty.
1	KD4115-1009001	1
2	KD4115-1009100	1
3	GB/T6177.1-2000 Nut M8	4
4	KD4115-1009003	1
5	KD4115-1009002	1
6	GB/T5789-1986 Bolt M8*20	22

Fuel injector assembly KD4115-1112000

No. Part No.	Description	Qty.
1	KD4115-1112100	4
2	KD4115-1112001	4

Exhaust manifold assembly KD4115-1008000

No. Part No.	Description	Qty.
1	GB/T899-1988 Stud AM10*30	4
2	KD4115-1104600	1
3	GB/T899-1988 Stud AM10*130	4
4	GB/T899-1988 Stud AM10*120	2
5	GB/T6177.1-2000 Nut M10	12
6	GB/T899-1988 Stud AM10*50	2
7	KD4115-1008001a	1
8	KD4115-1008002	4

Glow plug assembly KD4115-3770000

No. Part No.	Description	Qty.
1	KD4115-3770001	1
2	KD4115-3770100	4

Fuel injection pump assembly KD4115-1111000

No. Part No.	Description	Qty.
1	KD4115-1111001	1
2	KD4115-1111003	1
3	KD4115-1111002	1
4	GB/T5789-1986 Bolt M10*90	2
5	KD4115-1111000	1
6	GB/T97.1-2002 Washer 10	4
7	GB/T93-1987 Washer 10	4
8	GB/T6176-2000 Nut M10*1.25	4
9	GB/T899-1988 Stud AM10*4*101.25*35	1
10	KD4115-1111005	1
11	GB/T5789-1986 Bolt M10*20	2
12	KD4115-1111004	1
13	GB/T5789-1986 Bolt M10*25	2

Thermostat assembly KD4115-1306000

No. Part No.	Description	Qty.
1	KD388-01043	1
2	GB/T5789-1986 Bolt M8*90	3
3	GB/T5789-1986 Bolt M8*25	1
4	KD4115-1306001	1
5	KD4115-1306002	1
6	KD4115-1306004	2
7	KD4115-1306005	1
8	KD4115-1306006	1
9	KD4115-1306003	1
10	KD4115-1306007	1

Oil pump assembly KD4115-1011000

No. Part No.	Description	Qty.
1	KD4115-1011009	1
2	KD4115-1011001	1
3	GB/T308-2002 Steel ball Φ 12	1
4	KD4115-1011004	1
5	GB/T91-2000 Cotter pin 4*25	1
6	KD4115-1011003	1
7	KD4115-1002113	2
8	KD4115-1011006	1
9	KD4115-1011008	2
10	GB/T5789-1986 Bolt M8*25	4
11	KD4115-1011002	1
12	KD4115-1011005	1
13	KD4115-1011007	2

Fan assembly KD4115-1308000

No. Part No.	Description	Qty.
1	KD4115-1308001	1
2	GB/T70.1-2000 Screw M10*60	6
3	KD4115-1308100	1
4	GB/T9074.17-1988 Bolt assembly M10*25	6

Water pump assembly KD4115-1307000

No. Part No.	Description	Qty.
1	KD4115-1307002	1
2	KD4115-1307007	1
3	KD4115-1307005	1
4	GB/T5789-1986 Bolt M8*70	1
5	KD4115-1307008	1
6	KD4115-1307006	1
7	KD4115-1307004	1
8	GB/T5789-1986 Bolt M8*60	2
9	GB/T5789-1986 Bolt M8*25	2
10	KD4115-1307009	1
11	KD4115-1307011	2
12	KD4115-1307100	1
13	KD4115-1307003	1
14	KD4115-1307001	1
15	KD4115-1307012	1
16	GB/T5789-1986 Bolt M8*110	3
17	GB/T5789-1986 Bolt M8*80	5

Engine block assembly KD4114-1002000

No. Part No.	Description	Qty.
1	GB/T97.1-2002 Washer 12	13
2	GB/T5789-1986 Bolt M12*20	1
3	GB/T5789-1986 Bolt M8*20	2
4	GB/T5789-1986 Bolt M8*16	8
5	KD4115-1002014	1
6	KD4115-1002015	1
7	GB/T5785-2000 Bolt M12*1.5*75	14
8	GB/T18674-1996 Bolt M14*24	1
9	KD4115-1002013	1
10	KD4115-1002031	1
11	KD4115-1002012	1
12	KD4115-1002016	1
13	GB/T5789-1986 Bolt M8*12	2
14	GB/T899-1988 Stud AM14*1.5*35	1
15	GB/T899-1988 Stud AM12*1.25*55	1
16	KD4115-1002013	1
17	KD4115-1002014	1
18	KD4115-1002012	1
19	GB/T6177.2-2000 Nut M12*1.25	1
20	GB/T5782-2000 Bolt M14*65	1
21	KD4115-1002502	1
22	KD4115-1002501	1
23	KD4115-1002601	1
24	GB/T5783-2000 Bolt M14*30	1
25	KD4115-1002501a	1
26	KD4115-1002501b	1
27	KD4115-1002401	1
28	KD4115-1002402	1
29	KD4115-1002403	1
30	KD4115-1002404	1
31	KD4115-1002405	1
32	KD4115-1002005	1
33	KD4115-1002004	2
34	KD4115-1002100	1
35	KD4115-1002006	4
36	KD4115-1002018	1
37	KD4115-1002009	2
38	KD4115-1002022	1
39	GB/T5789-1986 Bolt M10*50	1
40	GB/T899-1988 Stud AM12*1.5*70	1
41	GB/T903-1988 Stud AM10*55	1
42	KD4115-1002003	5
43	KD4115-1002002	5
44	KD4115-1002023	1
45	KD4115-1002021	1
46	KD4115-1002022	1
47	GB/T899-1988 Bolt M8*25	4
48	GB/T5789-1986 Bolt M8*35	13
49	GB/T899-1988 Stud AM8*55	1
50	GB/T899-1988 Stud AM10*65	1
51	GB/T5785-2000 Bolt M12*1.5*60	1
52	KD4115-1002021	1
53	GB/T5789-1986 Bolt M10*20	8
54	KM376-1002006	1
55	KD4115-1002006	1
56	JB/ZQ454-1997 Seal gasket 14*18	3
57	KD4115-1003023</	